

NEROLAC
PERMA

**KAHO APNE
GHAR KO
JUG-JUG JIYO**

KANSAI NEROLAC PAINTS LIMITED

A SUBSIDIARY OF KANSAI PAINT CO. LTD., JAPAN
GANPATRAO KADAM MARG, LOWER PAREL, MUMBAI 400 013.
www.nerolac.com



NEROLAC PERMA

About Nerolac Perma Range

After becoming a household name in home paints and successful renowned paint brand for industrial coatings. Nerolac is launching their specially formulated products to tackle water leakage issues. Nerolac Perma range provides long lasting solutions that enhance the life of your homes.

Beautiful home is termed healthy only when the house is damp free, crack free and leakage free. Nerolac Perma range ensures 360° protection and prevention against algae, fungus and mold which may lead to respiratory issues.

JO BADHAYE APKE TERRACES AUR BAHARI DEEWARON KI UMAR



Product Benefits



8 years of waterproofing warranty



Crack bridging up to 4 mm*



Up to 8°C of surface temperature reduction



UV resistant



Anti Algae



Foot trafficable



Up to 700%* film elongation

Application Areas

Terrace and exterior surfaces like concrete roof with slope & flat surface, chajjas, vertical walls

Mixing



For primer coat (self priming):
Dilute Nerolac Perma NoDamp with 30% water



For waterproof coating - direct application, no mixing required

Application Method

1. Surface preparation



Surface to be treated must be thoroughly cleaned and all loose material must be removed



Small cracks upto 10 mm or less should be opened, cleaned & filled with Nerolac Perma Crack Filler



Bigger cracks, damaged portions & hollow areas must be repaired with Nerolac Perma Waterproof Polymer Modified mortar

1. Recommended Waterproofing Applications

a) For terrace (horizontal surfaces)



Apply a primer coat of Nerolac Perma NoDamp as per suggested dosage and achieve the forced coverage as mentioned



For availing 8 years waterproofing warranty:
Now apply two undiluted coats of Nerolac Perma NoDamp in 90 degrees to each other and achieve the forced coverage as mentioned

b) For painting of exterior surface



Apply a primer coat of Nerolac Perma NoDamp as per suggested dosage and achieve the forced coverage as mentioned



For availing 8 years waterproofing warranty:
Now apply single undiluted coat of Nerolac Perma NoDamp and achieve the forced coverage as mentioned

Coverage

For 8 years: Exterior walls: 25-26 sft/L
Terrace: 9-10 sft/L

Packaging

Nerolac Perma Nodamp is available in 1 ltr, 4 ltr, 10 ltr and 20 ltr packs

BAHARI DEEWAREIN AUR CHHAT SURAKSHIT RAHEGI SAALO-SAAL, DAMP PROTECT EXTERIOR KE WARRANTY KE SAATH



Product Benefits



Waterproofing warranty of up to 3 years



Up to 5 times more rain protection than regular primer



Elongation up to 150%



Crack-bridging ability up to 1 mm



Self-priming

Application Areas

Terraces and exterior surfaces like concrete roofs with slopes and flat surfaces, chajjas, vertical walls

Mixing

For primer coat (Self-priming)

- **Vertical walls** - Dilute Nerolac Dampprotect Exterior 10% by volume (Eg: Add 100 ml water to 1 ltr Nerolac Perma Dampprotect Exterior)
- **Horizontal areas/terraces** - Nerolac Perma Dampprotect Exterior to be diluted with water in 3:1 ratio by volume
- **For waterproof coating** - No dilution to be done

Coverage

For terrace (Horizontal surfaces)

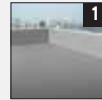
- **Primer coat** - Forced coverage of 55-65 sft/L
- **Waterproof coating** - Forced coverage of 37 sft/L/coat

For vertical walls

- **Primer coat** - Forced coverage of 90-97 sft/L
- **Waterproof coating** - Forced coverage of 46 sft/L/coat

Directions For Use

Plastering



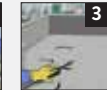
Let masonry surface cure completely. Allow it 28 days of curing time

Surface preparation



1 Prepare the surface by cleaning it with a high-pressure water jet/wire brush and ensure that it is free

from dust, oil, grease and loose particles. Check the substrate for its soundness and damaged portions



Cracks up to 10 mm should be filled with Nerolac Perma Crack Filler

Repair hollow areas with Nerolac Perma Waterproof polymer modified cement-sand mortar

Application on vertical walls/surfaces



1
Apply one self-priming coat of Nerolac Perma Damp Protect Exterior (10% by volume/100 ml water to 1 ltr of Nerolac Perma Damp Protect Exterior) on the surface with the help of a brush or roller



2
Allow it to dry for a minimum of 4 h followed by one undiluted coat of Nerolac Perma Damp Protect Exterior



3
Top coat this treatment with two coats of any Nerolac Paints Exterior Emulsion Paint as per the recommended application procedure

Application on terraces/horizontal surfaces:



1
Apply one self-priming coat of Nerolac Perma Damp Protect Exterior (diluted with water in 3:1 ratio by volume)



2
Allow it to dry for at least 3-4 h. Apply two coats as per forced coverage



3
Make sure the product is applied on entire roof including parapet walls to form a blanket

Packaging

Nerolac Perma Damp Protect Exterior is available in 1 ltr, 4 ltr, 10 ltr and 20 ltr packs

JAB DEWARON SE SEELAN HATEGI, TAB KHOBSURATI LAMBI CHALEGI



Product Benefits



Provides 10 times better waterproofing than ordinary primer



Better hiding and whiteness than ordinary primer



Increases the coverage of the top coat



Prevents surface dampness



Enhances the life of the top coat

Application Areas

Interiors of house

Mixing

Dilute Nerolac Perma Damp Protect Interior 50% by volume with water and apply it in two coats

Coverage

200 sft/L/coat

Directions For Use

- Ensure that the surface is properly cleaned and free from any loosely held plaster/powder
- Keep the moisture content in the surface not more than 40%
- Surface preparation: Clean surface of any dirt and loose particles. Sand the surface with sand paper 180 and wipe it clean
- Apply a single coat of Nerolac Perma Damp Protect Interior with a maximum of 50% dilution by volume with water, with a forced coverage of not more than 200 sft. Allow it to dry for 3-4 h
- For a smooth finish of the top coat, apply two thin coats of Nerolac Acrylic Wall Putty. Allow it to dry for 4-6 h. Wipe it clean with sand paper 180
- Apply a second coat of Nerolac Perma Damp Protect Interior with a maximum of 50% dilution by volume with water, with a forced coverage of not more than 200 sft. Allow it to dry for 3-4 h
- Apply any water-based interior painting system over 2nd coat of Nerolac Perma Damp Protect Interior with or without primer

Packaging

Nerolac Perma Damp Protect Interior is available in 1 ltr, 4 ltr, 10 ltr, and 20 ltr packs

**JAB DEWARON SE
SEELAN HATEGI,
TAB KHOBSURATI
LAMBI CHALEGI**



Product Benefits



Resists dampness
and efflorescence



Excellent levelling
and easy sanding



Less dusting
while sanding



High coverage



Wall primer
can be avoided

Application Areas

It is recommended for all types of concrete/mortar substrates, new as well as old

Coverage

15 +/- 3 sft/L in two coats

(Coverage may vary depending on quality of substrates, undulations in substrates and skill of applicator)

Application Method

1. Surface Preparation

- Remove all loose and deleterious material from the wall with the help of wire brush, putty blade or other suitable equipment. Dampen or moist the surface with water to foster smooth and easy application of Nerolac Perma Waterproof Cement Putty
- Mix Nerolac Perma Waterproof Premium Putty with 35-40% clean water to make a smooth and homogeneous easy-to-apply paste

2. Recommended Application

- It is recommended to use Nerolac Speed X Putty mixer for uniform and lump-free mixing
- Apply first coat of Nerolac Perma Waterproof Premium Putty on wet/moistened surface from bottom to top in upward direction with putty blade or suitable equipment. Allow the surface to dry for 4-6 h depending on climatic conditions
- Sand the surface with emery paper if needed to level the surface
- Apply second coat of Nerolac Perma Waterproof Cement Putty. Wet sponge the final coat. Allow it to dry thoroughly overnight before applying paint application

Packaging

Nerolac Perma Waterproof Premium Putty is available in 20 kg and 40 kg packs

JO BADHAYE AAPKE DEEWARON KI UMAR



Product Benefits



1 mm film thickness



50% film elongation



Strong adhesion



Flexible coating

Application Areas

- Walls
- Concrete roof and podium slabs
- Basement retaining wall
- Toilet & Bathroom sunk
- Concrete water tank

Mixing



Mix the entire quantity of both liquid and powder

Application Method



Surface to be treated must be thoroughly cleaned and all loose material must be removed



Surface should be in pre-wetted condition



Apply as per suggested dosage in 2 coats, a gap of 4-6 h to be kept in between each coat



If Nerolac Perma Super 2K is applied on a vertical surface, sprinkle clean fine sand while the second coat is still wet, for better adhesion of subsequent treatment

Coverage

6-7 sq.ft/kg in 2 coats

Packaging

Nerolac Perma Super 2K is available in 3 kg and 15 kg packs

**JO BADHAYE
AAPKE DEEWARON
KI UMAR**



Product Benefits



Fills up to
10 mm cracks



Single Coat
Application



Water Resistant



Strong Adhesion
& Flexible

Application Areas

External and internal plastered wall cracks

Application Method



Surface should be free from
dust, oil, grease and loose
particles



Hairline cracks must be widened up to 1mm
width minimum and then filled. Widen the
cracks to form a 'V' groove and prime the
surface with suitable primer



Fill one coat of Nerolac Perma
Crack Filler



Press the paste firmly into the crack with a
spatula or putty knife and level with the
surface. Allow it to dry for overnight

Coverage

25 – 30 RMT/Kg in 5 mm width x 5 mm depth of crack

Packaging

Nerolac Perma Crack Filler is available in 250 g & 900 g packs

JO BADHAYE AAPKE CHATTH KI UMAR



Product Benefits



Strong bonding to concrete and plaster



Prevents corrosion and cracks



Durable repairs



Economical waterproofing

Application Areas

• Waterproofing of terraces and bathrooms • General repair of edges of column, beam, chajja and terrace • For bonding of old to new concrete & plaster • For bonding tile on tile

Mixing

- For Waterproofing - Mix Nerolac Perma Waterproof Polymer with cement in ratio of 1:1.5 by volume
- As Bond Coat - Mix Nerolac Perma Waterproof Polymer with cement in 1:1 ratio by volume

- As Repair Mortar & Concrete - Mix 10% of Nerolac Perma Waterproof Polymer by weight of cement

Coverage

- Waterproof coating: 21-25 sft/L • Bonding Agent & Bonding tile on tile: 45-50 sft/L per coat • Repair Mortar: 5 ltr per 50 kg of cement bag

Application Method

1. Surface preparation



Surface to be treated must be thoroughly cleaned and all loose material must be removed

2. Recommended Applications



1 For Waterproofing - Apply as per suggested mixing in 2 coats, a gap of 1-2 h to be kept in between each coat



2 As Bond Coat - Apply only single coat on surface to be repaired as per suggested mixing. For good adhesion, apply repair mortar / concrete when the bond coat is tacky



3 As repair mortar / concrete - Make this as per suggested mixing and apply after using Bond Coat



4 For bonding tile on tile / stone surface - Apply Bond Coat as per suggested mixing on floor as well as back of tiles / stone and fix them with sand cement mortar or any tile adhesive when bond coat is still tacky

Packaging

Nerolac Perma Waterproof Polymer is available in 200 ml, 1 ltr, 5 ltr and 20 ltr packs

JO BADHAYE AAPKE CHATTH KI UMAR



Product Benefits



Strong bonding to concrete and plaster



Prevents corrosion and cracks



Durable repairs



Economical waterproofing

Application Areas

- Waterproofing of terraces and bathrooms
- General repair of edges of column, beam, chajja and terrace
- For bonding of old to new concrete & plaster
- For bonding tile on tile

Mixing

- For Waterproofing - Mix Nerolac Perma Waterproof Latex with cement in ratio of 1:1.5 by volume
- As Bond Coat - Mix Nerolac Perma Waterproof Latex with cement in 1:1 ratio by volume
- As Repair Mortar & Concrete - Mix 10% of Nerolac Perma Waterproof Latex by weight of cement
- For bonding tile on tile / stone surface - Nerolac Perma Waterproof Polymer to be mixed with cement in 1:1 ratio by volume

Coverage

- Waterproof coating: 59-69 sft/L in 2 coats
- Bonding Coat & Bonding tile on tile: 129-140 sft/L per coat
- Repair Mortar: 5 ltr per 50 kg of cement bag

Application Method

1. Surface preparation



- 1** Surface to be treated must be thoroughly cleaned and all loose material must be removed

2. Recommended Applications



- 1** For Waterproofing - Apply as per suggested mixing in 2 coats, a gap of 1-2 h to be kept in between each coat



- 2** As Bond Coat - Apply only single coat on surface to be repaired as per suggested mixing. For good adhesion, apply repair mortar / concrete when the bond coat is tacky



- 3** As repair mortar / concrete - Make this as per suggested mixing and apply after using Bond



- 4** For bonding tile on tile / stone surface - Apply Bond Coat as per suggested mixing on floor as well as back of tiles / stone and fix them with sand cement mortar or any tile adhesive when bond coat is still tacky

Coat

Packaging

Nerolac Perma Waterproof Latex is available in 200 ml, 500 ml, 1 ltr, 5 ltr and 20 ltr packs

JO BADAI APKE GHAR KI UMAR



Product Benefits



Increases durability & Strength



Ensure superior workability



Waterproofs concrete & plaster



Resists corrosion of steel



Reduces rebound losses in plastering



Up to 10% water reduction



Enhances life

Application Areas

Slab, Concrete & Plaster

Application Method



Mix concrete / mortar without adding water



Now add 3/4 of required water into the mixture and mix for 3-4 min



In the remaining 1/4 water, add 200 ml of Nerolac Perma Cement+ for every bag of 50 kg cement



Pour this into the concrete / mortar and mix for 3-4 min

Packaging

Nerolac Perma Cement+ is available in 200 ml, 1 ltr, 5 ltr and 20 ltr packs

**GARMI KI KARDE
CHUTTI, AUR SEELAN
KI NO ENTRY.**



Product Features



Up to 12 years
of Waterproofing



Anti-algae



Up to 140C of surface
temperature reduction



Provides
Anticarbonation



Waterproofing
up to 10 bars



Up to 700%
film elongation

Application Areas

Terrace and exterior surfaces like concrete roof with slope & flat surface, chhajjas, vertical walls, roofs with china mosaic.

12 YEARS WARRANTY				
10 YEARS WARRANTY				
TERRACE & HORIZONTAL SURFACE		Primer Coat (Self Priming Coat) with 30% water dilution	Waterproofing Coat without dilution	Reinforcement With Fibre Mesh/ Polyester Fleece of 45 GSM
	Coat	1	2	
	Coverage	70 Sq.ft/L	12 Sq.ft/L	

12 YEARS WARRANTY			
EXTERIOR WALLS		Primer Coat (Self Priming Coat) with 30% water dilution	Waterproofing Coat without dilution
	Coat	1	2
	Coverage	70 Sq.ft/L	40 Sq.ft/L

Coverage

Forced coverage of 3.7 - 4.2 m²/L/Coat

Technical Information

PROPERTIES	SPECIFICATION	RESULTS
Appearance	Ready to use viscous liquid	
Specific gravity @ 300°C, g/cc	1.25 ± 0.05 g/cc	
Application temperature	50C – 350C	
Tensile strength, N/mm ²	ASTM D 412	2.5
Elongation at break, %	ASTM D 412	500
Adhesion strength, N/mm ²	ASTM D 4541	2 - 3
Crack bridging ability, mm	AS/NZS 4548:5:1999	3 - 4
Water permeability	DIN 1048	Nil against control
Dry Film Thickness	Horizontal : 600 - 650 microns Vertical : 300 - 350 microns	

Directions for Use

1. Surface Preparation



Surface to be treated must be thoroughly cleaned and all loose material must be removed



Small cracks upto 10 mm or less should be opened, cleaned & filled with Nerolac Perma Crack Filler



Bigger cracks, damaged portions & hollow areas must be repaired with Nerolac Perma Waterproof Polymer Modified mortar



Roof/terrace with china mosaic tiles should be checked for its soundness; any damaged area should be firmly bedded and filled with a tile grout. All the cracks should be filled with Nerolac Perma Waterproof Polymer/Nerolac Perma Waterproof Latex modified mortar.

2. Application Method

a) Waterproofing of terraces (Horizontal surfaces)–



Apply a self priming coat of Nerolac Perma NoDamp+ as per suggested dilution and let it dry for 4-6 hrs.



Apply two undiluted coats of Nerolac Perma NoDamp+ in 90 degrees to each other and achieve the forced coverage as mentioned. Keep a gap of 4-6h between each coat.

b) Waterproofing of exterior walls (Vertical surfaces) –



Apply a primer coat of Nerolac Perma NoDamp+ as per suggested dilution and let it dry for 4-6 hrs.



Apply single undiluted coat of Nerolac Perma NoDamp+ and achieve the forced coverage as mentioned.

Precautions and Recommendations

- For best performance on terrace, ensure that the product is applied on the entire roof including parapet wall.
- For reducing the surface temperature, after the final coat of Nerolac Perma NoDamp+ the surface should be left open to sky and not to be covered.
- Do not apply during rains or extreme temperatures.
- Avoid excessive surface abuse which could lead to puncturing of the film.
- Do not over dilute.
- For vertical surfaces, after applying Nerolac Perma NoDamp+ on wall, exterior painting must be done.
- For horizontal surfaces, use Nerolac Perma butyl tapes at all joints and corners for better reinforcement.
- Forced coverage gives the long term performance hence it is recommended to ensure coverage as per data sheet to avail waterproofing warranty.

Shelf Life

Best before 24 months from the date of manufacture when kept in sealed pack and stored under proper conditions

Pack Size

Available in 1L & 4L packs.

DEEWARON KI KHOBSURATI BADAYE, JAB SEELAN KO KARDE GOODBYE



Product Features



3 years of Waterproofing



Efflorescence resistance mechanism



High moisture resistance up to 70%



Resist up to 4 Bars negative hydrostatic pressure



Pore blocking technology

Application Areas

Plastered surfaces with sufficient porosity, interior and exterior walls and ceiling

Coverage

Forced coverage of 3.7 - 4.2 m²/L/Coat

Directions for Use

1. Surface Preparation

- Surface to be treated must be thoroughly cleaned and all loose material must be removed.
- On existing efflorescence surface, clean all the efflorescence as per market practice or by wire brushing followed by thorough water washing.
- Small cracks up to 10mm or less should be opened, cleaned & filled with Nerolac Perma Crack filler.
- Bigger cracks, damaged portions & hollow areas must be repaired with Nerolac Perma Waterproof Polymer/Nerolac Perma Waterproof Latex modified mortar.
- Surface should be in SSD (saturated surface dry) prior the application of Nerolac Perma Damp Lock.

2. Application Method

a) For Damaged Surfaces

- Existing putty to be removed till plaster level form skirting to the affected area covering an additional one ft distance across all sides of affected area.
- Nerolac Perma Damp Lock is recommended to be applied on plaster by brush ensuring material goes inside the pores/interstices.
- Apply first coat of Nerolac Perma Damp Lock without dilution with a forced coverage of 3.7 - 4.2 m²/L from skirting to the affected area, covering an additional one ft distance across all sides of affected area. Allow it to dry for 6-8 hrs.
- Apply 2nd Coat of Nerolac Perma Damp Lock without dilution with coverage of 3.7 - 4.2 m²/L perpendicular to first coat. Allow it to dry for 6-8 hrs.
- Apply two coats of Nerolac cement wall putty or Nerolac acrylic wall putty or Nerolac perma waterproof premium putty or Nerolac perm crystal waterproof putty over Nerolac Perma Damp Lock. Allow it to dry for 6-8 hours and sand with sand paper 180. Wipe clean and paint it as per regular painting practices.

b) For New Surfaces

- Apply a single coat of Nerolac Perma Damp Lock without dilution with a forced coverage of not more than 3.7 - 4.2 m²/L. Allow it to dry for 6-8 hrs.
- Apply two coats of Nerolac cement wall putty or Nerolac acrylic wall putty or Nerolac perma waterproof premium putty or Nerolac perma crystal waterproof putty over Nerolac Perma Damp Lock. Allow it to dry for 6-8 hours and sand with sand paper 180. Wipe clean and paint it as per regular painting practices.

Technical Information

Properties	Specification
Appearance	
Specific gravity @ 300°C, g/cc	
Application temperature	
Negative side water pressure	ASTM D 4541: 2002

Precautions and Recommendations

- Putty application over Nerolac Perma Damp Lock is mandatory.
- Nerolac Perma Damp Lock is not to be used with hand-made putty or lambi putty.
- Do not apply primer or Topcoat directly over Nerolac Perma Damp Lock as it causes de-wetting.
- Nerolac Perma Damp Lock is not applicable where moisture percentage is more than 70% or there is a live leakage.
- Do not apply when ambient temperature is less than 10°C or the temperature might drop to this level within 8 hours of application.
- Do not apply when humidity is greater than 90%, it may cause pre-condensation on walls.
- Make sure that material is thoroughly stirred before application.
- Subsequent coats of the topcoats to be done as per manufacturer's recommendation.
- Please refer material safety data sheet (MSDS) of Nerolac Perma Damp Lock for safety measures while handling the product.

Pack Size

Best before 24 months from the date of manufacture when kept in sealed pack and stored under proper conditions

Shelf Life

Available in 1L & 4L packs.

NEROLAC PERMA

TILE ADHESIVE CLASSIC



KAHO
APNE GHAR KO
JUG - JUG JIYO

Nerolac Perma Tile Adhesive Classic is a polymer modified grey cement based tile adhesive for fixing high porosity tiles like ceramic, clay tiles, terracotta tiles and quarry tiles of regular size. It is suitable for horizontal surfaces, over the cementitious substrate for indoor application in dry as well as in wet areas.

Application Areas

- ⊙ Floor - Internal both wet & dry areas

Product Features



Strong adhesion/
bond



Can be used in
wet areas



Waterproof

Application Method

1. Surface Preparation



Surface must be thoroughly cleaned and all loose material must be removed to ensure proper adhesion

2. Recommended Applications



Mix Nerolac Perma Premium Tile Adhesive with water as per the recommended dosage



Stir continuously for 5-10 minutes min by hand or power mixer to obtain a homogenous paste



Mix again for about 2 minutes min



Using a notched trowel, apply the above mix to a thickness of 2-3 mm either on the wall and on the back of the tile



Using a notched trowel to remove excess material. Put the tile in place and tap gently with a wooden hammer

- ⊙ **Mixing** - Nerolac Perma Eco Tile Adhesive to be mixed with water in the ratio of 3.5:1 by volume
- ⊙ **Coverage** - 5 - 6 m² / 20 kg Bag at 3 mm thickness
- ⊙ **Pack Sizes** - Nerolac Perma Eco Tile Adhesive is available in the pack size of 20 kg and 50 kg

Precautions

- ⊙ Always add powder to water, do not add excess than the recommended.
- ⊙ Never add cement and sand at site.
- ⊙ Protect from direct rainfall and foot traffic for at least 24 hours.

Note: For further more details please refer to TDS

NEROLAC PERMA

TILE ADHESIVE SILVER

TYPE 1T



KAHO
APNE GHAR KO
JUG - JUG JIYO

Nerolac Perma Tile Adhesive Silver is polymer modified cement based tile adhesive for fixing ceramic, semi-vitreous, vitrified tiles and natural stones of regular size. It is suitable for horizontal and vertical surfaces, over the cementitious substrate for indoor application in dry as well as in wet areas and exterior floor application. It is also recommended for tile on tile application.

Application Areas

- Floor - Internal External both wet & dry areas
- Walls: Internal both wet & dry areas

Product Features



Strong adhesion/
bond



Sag resistance/
non-slip



Tile on tile
application



Can be used in
wet areas



Easy to apply

Application Method

1. Surface Preparation



Surface must be thoroughly cleaned and all loose material must be removed to ensure proper adhesion

2. Recommended Applications



Mix Nerolac Perma Premium Tile Adhesive with water as per the recommended dosage



Stir continuously for 5-10 minutes min by hand or power mixer to obtain a homogenous paste



Allow the resultant paste to stand for about 10 minutes min



Mix again for about 2 minutes min



Using a notched trowel, apply the above mix to a thickness of 2-3 mm either on the wall and on the back of the tile



Using a notched trowel to remove excess material. Put the tile in place and tap gently with a wooden hammer



For tile on tile application on interior vertical surface, apply bond coat made of Nerolac Perma Waterproof Polymer or Nerolac Perma Waterproof Latex on the back of tile and surface to be tiled. Apply Nerolac Perma Premium Tile Adhesive when bond coat is tacky

- **Mixing** - Nerolac Perma Eco Tile Adhesive to be mixed with water in the ratio of 3.5:1 by volume
- **Coverage** - 5 - 6 m² / 20 kg Bag at 3 mm thickness
- **Pack Sizes** - Nerolac Perma Eco Tile Adhesive is available in the pack size of 20 kg, 25 kg, 30 kg and 50 kg

Precautions

- Always add powder to water, do not add excess than the recommended.
- Never add cement and sand at site.
- Protect from direct rainfall and foot traffic for at least 24 hours.

Note: For further more details please refer to TDS

NEROLAC PERMA

TILE ADHESIVE GOLD

TYPE 2TES1



KAHO
APNE GHAR KO
JUG - JUG JIYO

Nerolac Perma Gold is polymer modified cement based tile adhesive for ceramic, semi-vitreous, vitrified tiles and natural stones on variety of surfaces for both vertical and horizontal interior application, exterior floor application. It can be used in dry as well as wet areas for indoor as well as outdoor application. It is also recommended for tile on tile application.

Application Areas

- Floor - Internal External both wet & dry areas
- Walls: Internal both wet & dry areas

Product Features



Strong adhesion/
bond



Sag resistance/
non-slip



Tile on tile
application



Can be used in
wet areas



Easy to apply



Waterproof

Application Method

1. Surface Preparation



Surface must be thoroughly cleaned and all loose material must be removed to ensure proper adhesion

2. Recommended Applications



Mix Nerolac Perma Premium Tile Adhesive with water as per the recommended dosage



Stir continuously for 5-10 minutes min by hand or power mixer to obtain a homogenous paste



Allow the resultant paste to stand for about 10 minutes min



Mix again for about 2 minutes min



Using a notched trowel, apply the above mix to a thickness of 2-3 mm either on the wall and on the back of the tile



Using a notched trowel to remove excess material. Put the tile in place and tap gently with a wooden hammer



For tile on tile application on interior vertical surface, apply bond coat made of Nerolac Perma Waterproof Ploymer or Nerolac Perma Waterproof Latex on the back of tile and surface to be tiled. Apply Nerolac Perma Premium Tile Adhesive when bond coat is tacky

- **Mixing** - Nerolac Perma Eco Tile Adhesive to be mixed with water in the ratio of 3.5:1 by volume
- **Coverage** - 6.25 - 7.5 m² / 25 kg Bag at 3 mm thickness
- **Pack Sizes** - Nerolac Perma Eco Tile Adhesive is available in the pack size of 25 kg and 50 kg

Precautions

- Always add powder to water, do not add excess than the recommended.
- Never add cement and sand at site.
- Protect from direct rainfall and foot traffic for at least 24 hours.

Note: For further more details please refer to TDS

NEROLAC PERMA

TYPE 3T



KAHO
APNE GHAR KO
JUG - JUG JIYO

Nerolac Perma Tile Adhesive Diamond is polymer modified cement based adhesive for fixing ceramic, semi-vitreous, vitrified tiles and natural stones on variety of surfaces for both vertical and horizontal application. It can be used in dry as well as wet areas for indoor as well as outdoor application. It is also recommended for tile on tile application.

Application Areas

- ⦿ Floor - Internal External both wet & dry areas
- ⦿ Walls - Internal External both wet & dry areas

Product Features



Strong adhesion/
bond



Sag resistance/
non-slip



Tile on tile
application



Can be used in
wet areas



Easy to apply



Waterproof

Application Method

1. Surface Preparation



Surface must be thoroughly cleaned and all loose material must be removed to ensure proper adhesion

2. Recommended Applications



Mix Nerolac Perma Premium Tile Adhesive with water as per the recommended dosage



Slir continuously for 5-10 minutes min by hand or power mixer to obtain a homogenous paste



Allow the resultant paste to stand for about 10 minutes min



Mix again for about 2 minutes min



Using a notched trowel, apply the above mix to a thickness of 2-3 mm either on the wall and on the back of the tile



Using a notched trowel to remove excess material. Put the tile in place and tap gently with a wooden hammer



For tile on tile application on interior vertical surface, apply bond coat inside of Nerolac Perma Waterproof Plymer or Nerolac Perma Waterproof Latex on the back of tile and surface to be tiled. Apply Nerolac Perma Premium Tile Adhesive when bond coat is tacky

- ⦿ **Mixing** - Nerolac Perma Eco Tile Adhesive to be mixed with water in the ratio of 3.5:1 by volume
- ⦿ **Coverage** - 6.25 - 7.5 m² / 25 kg Bag at 3 mm thickness
- ⦿ **Pack Sizes** - Nerolac Perma Eco Tile Adhesive is available in the pack size of 25 kg and 50 kg

Precautions

- ⦿ Always add powder to water, do not add excess than the recommended.
- ⦿ Never add cement and sand at site.
- ⦿ Protect from direct rainfall and foot traffic for at least 24 hours.

Note: For further more details please refer to TDS